

**matt**  
SERIES \_\_\_\_\_

  
**savino**  
GRANITO



**B R I N G**  
**L I F E**  
TO YOUR HOME

600x1200mm  
**GVT | PGVT**  
2022 COLLECTION



# OUR BRAND STORY

Savino is a reputed, and leading manufacturer & supplier of glazed porcelain tiles and polished glazed vitrified tiles in India, with its headquarters located in the ceramic hub of India – Morbi. Following the remarkable success of Savino Ceramic in a concise time, we have set up a new series of production of 600x1200mm size – Savino accelerates our production and meets the growing demand. With its worldwide presence, cutting-edge modern technology, multi-layer distribution network, quality products, and skilled human resources, Savino has successfully established itself as one of the India's most reliable porcelain tiles manufacturers.

## VISION–MISSION

Savino strives to become a pioneer, developing innovative new age surfaces to meet our customers' most challenging demands. To provide opportunities for the material and intellectual growth of all our employees, and through our joint efforts, contribute to the advancement of society and humankind.







## Made in India

Each product we manufacture is conceived and produced entirely in India with a refined design and a particular care to make the room area unique and special. Savino is an ever-evolving company with a look at the future and a continuous innovation for increasing improvement through quality and care that characterized our production. The "Made in India" value can easily be seen through the wide range of high quality products which are conceived with a unique design that combines elegance, comfort and functionality.





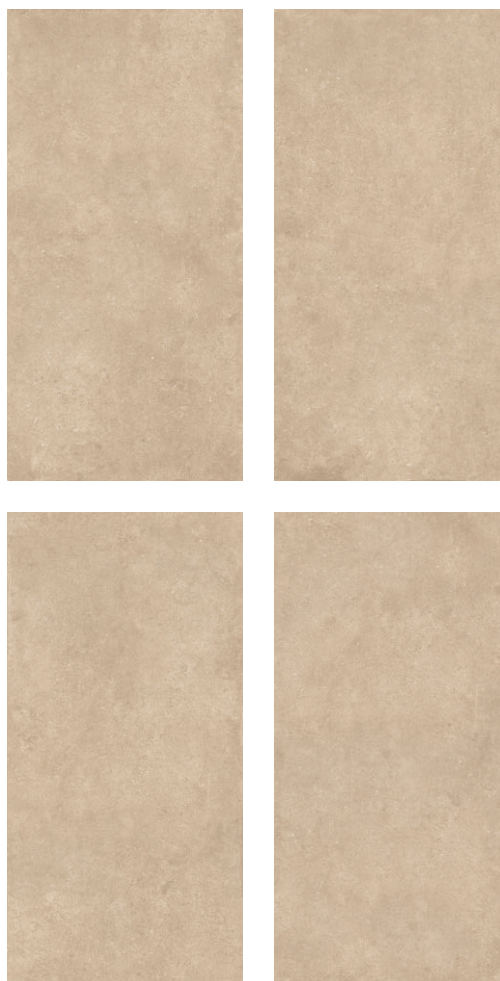




## **ALCORA BEIGE**

Size :  
**600x1200mm**

Random



Thickness :  
**9mm**

**matt**  
SERIES





## **ALCORA GREY**

Size :  
**600x1200mm**

Random



Thickness :  
**9mm**

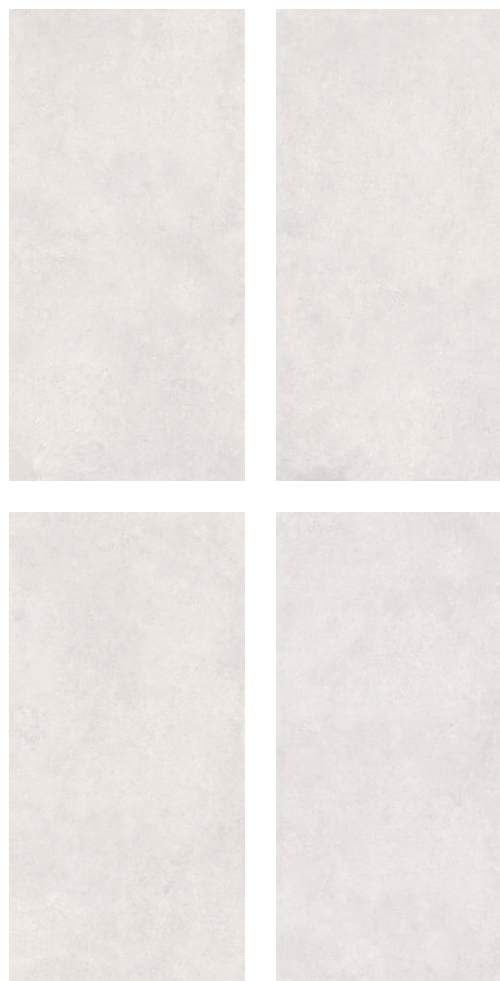
**matt**  
SERIES



## **ALCORA SILVER**

Size :  
**600x1200mm**

Random



Thickness :  
**9mm**

**matt**  
SERIES









## **BLISTER SILVER**

Size :  
**600x1200mm**

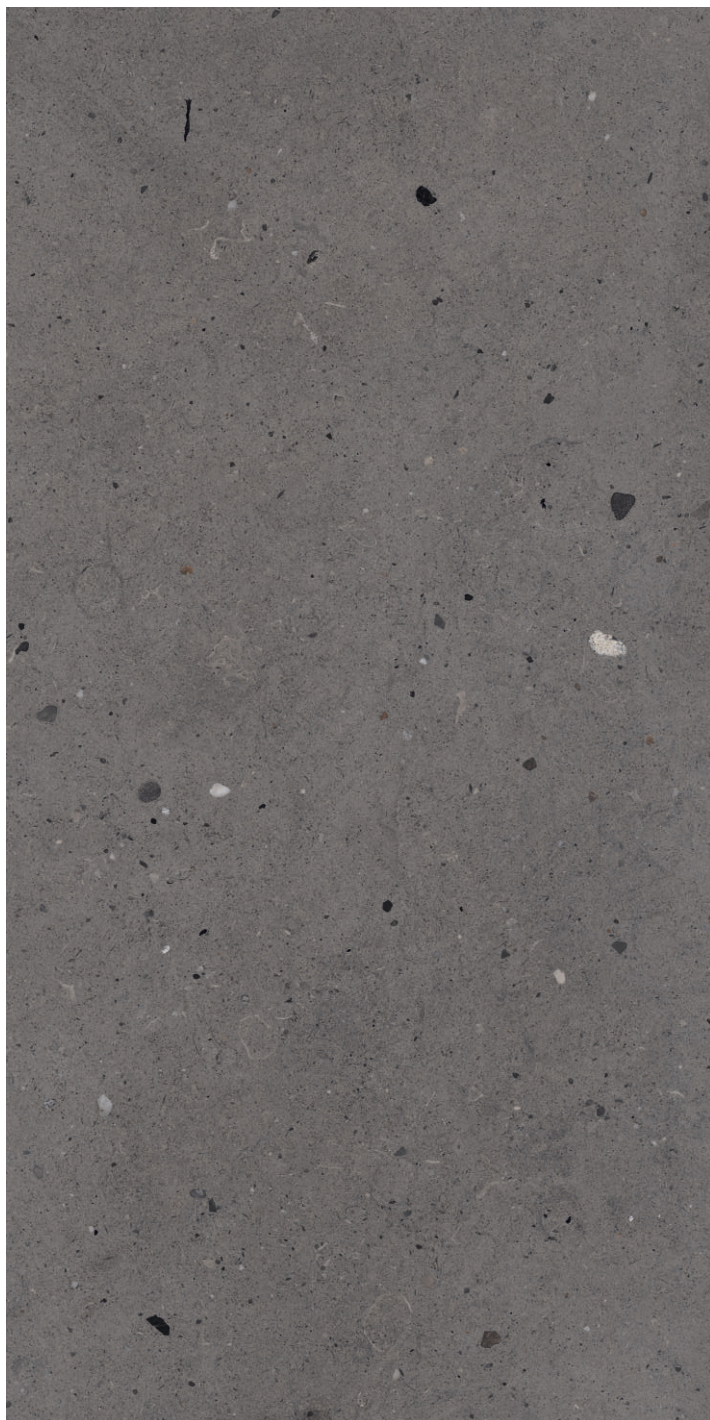
Random



Thickness :  
**9mm**

**matt**  
SERIES

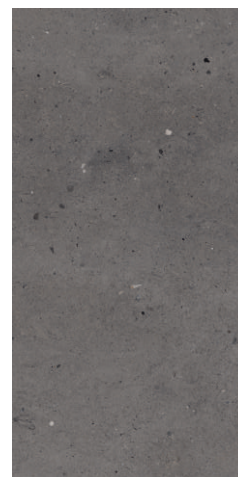
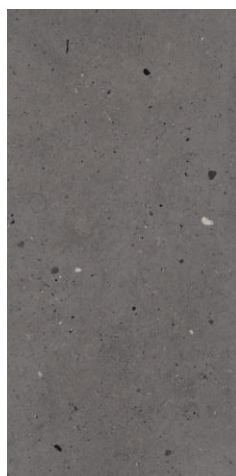




## **BLISTER GREY**

Size :  
**600x1200mm**

Random  
— — — —



Thickness :  
**9mm**

**matt**  
SERIES







## **CARNELIAN CREMA**

Size :  
**600x1200mm**

Random



Thickness :  
**9mm**

**matt**  
SERIES



## **CARNELIAN BEIGE**

Size :  
**600x1200mm**

Random  
—————



Thickness :  
**9mm**

**matt**  
SERIES —————









## CEMENTO BEIGE

Size :  
**600x1200mm**

Random



Thickness :  
**9mm**

**matt**  
SERIES



## CEMENTO CREMA

Size :  
**600x1200mm**

Random



Thickness :  
**9mm**

**matt**  
SERIES

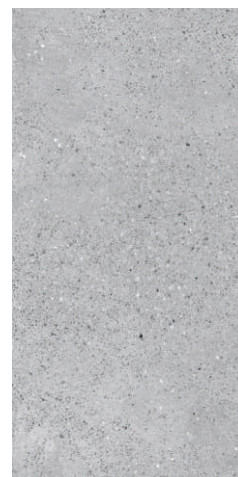
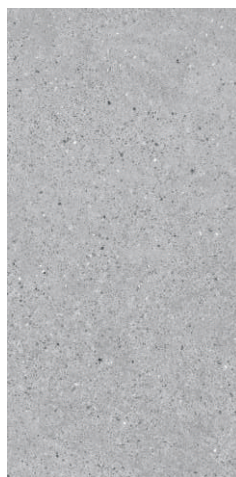
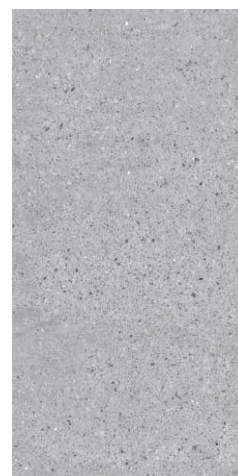




## CEMENTO GREY

Size :  
**600x1200mm**

Random



Thickness :  
**9mm**

**matt**  
SERIES









## DANIATO BEIGE

Size :  
**600x1200mm**

Random  
—————



Thickness :  
**9mm**

**matt**  
SERIES





## DANIATO GREY

Size :  
**600x1200mm**

Random



Thickness :  
**9mm**

**matt**  
SERIES





## **GALLURA GRIS**

Size :  
**600x1200mm**

Random  
---



Thickness :  
**9mm**

**matt**  
SERIES





## **GALLURA TAN**

Size :  
**600x1200mm**

Random  
**---**



Thickness :  
**9mm**

**matt**  
SERIES





## **GARNET CHOCO**

Size :  
**600x1200mm**

Random  
— — — —



Thickness :  
**9mm**

**matt**  
SERIES





## **GARNET GREY**

Size :  
**600x1200mm**

Random  
—————



Thickness :  
**9mm**

**matt**  
SERIES —————









## GLORIA BEIGE

Size :  
**600x1200mm**

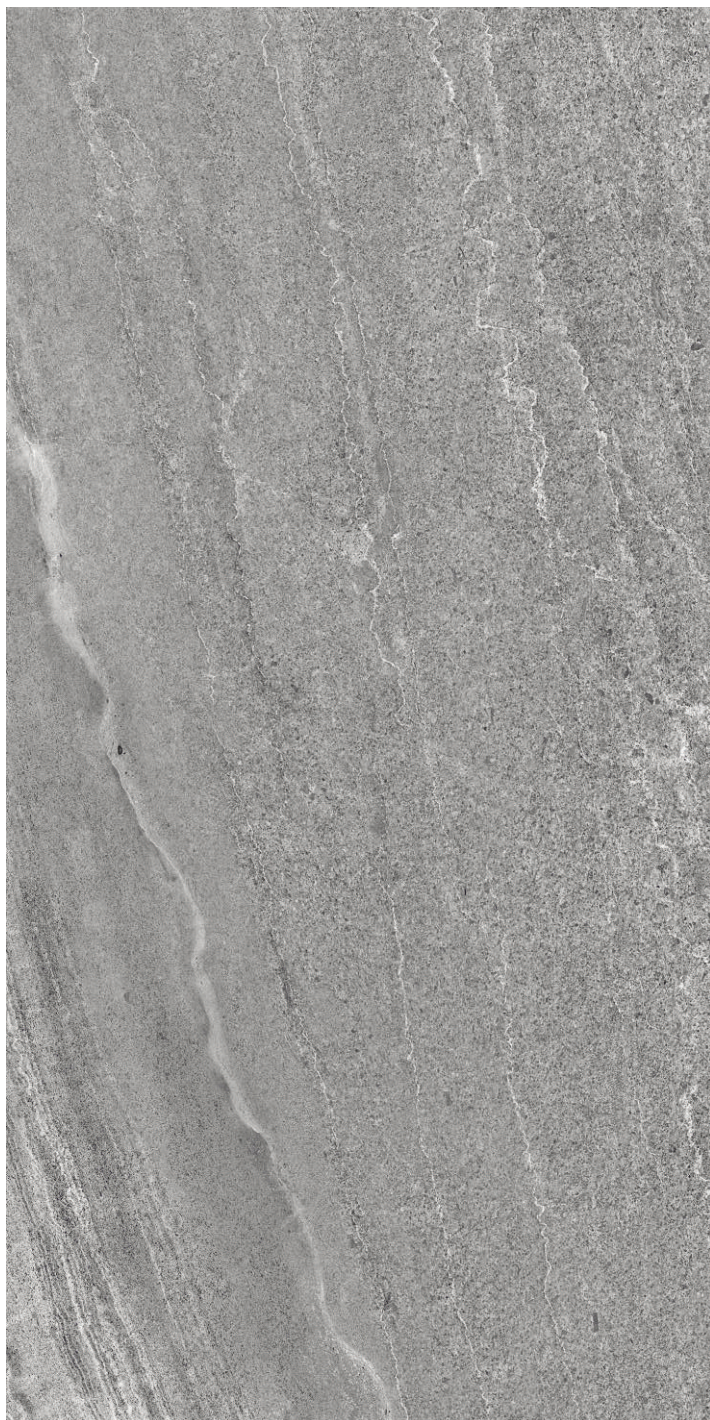
Random  
—————



Thickness :  
**9mm**

**matt**  
SERIES —————

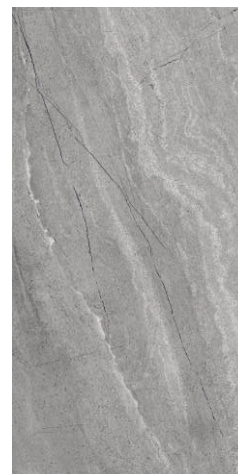
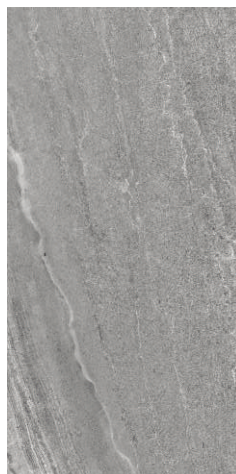




## GLORIA GREY

Size :  
**600x1200mm**

Random  
— — — —



Thickness :  
**9mm**

**matt**  
SERIES





## GLORIA SILVER

Size :  
**600x1200mm**

Random



Thickness :  
**9mm**

**matt**  
SERIES









## **MADISON GREY**

Size :  
**600x1200mm**

Random  
— — — —



Thickness :  
**9mm**

**matt**  
SERIES





## **MADISON BROWN**

Size :  
**600x1200mm**

Random  
— — — —



Thickness :  
**9mm**

**matt**  
SERIES

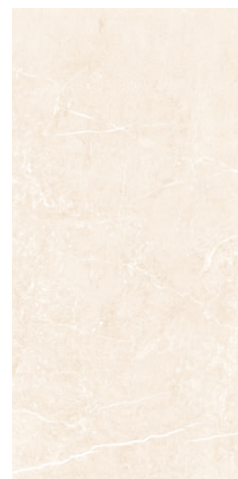




## **MADISON CREMA**

Size :  
**600x1200mm**

Random  
—————



Thickness :  
**9mm**

**matt**  
SERIES —————

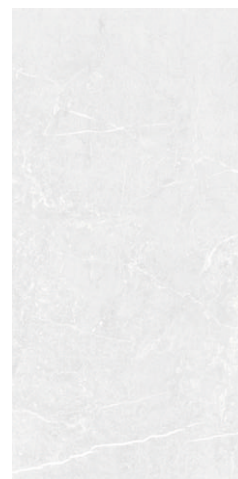
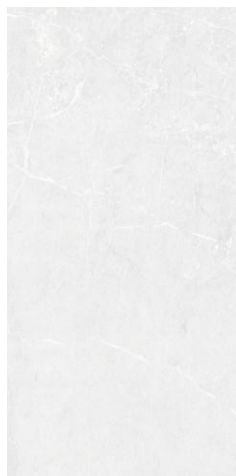




## **MADISON SILVER**

Size :  
**600x1200mm**

Random



Thickness :  
**9mm**

**matt**  
SERIES









## **PARKER CREMA**

Size :  
**600x1200mm**

Random  
— — — —



Thickness :  
**9mm**

**matt**  
SERIES





## **PARKER BROWN**

Size :  
**600x1200mm**

Random  
— — — —



Thickness :  
**9mm**

**matt**  
SERIES





## **PARKER GREY**

Size :  
**600x1200mm**

Random



Thickness :  
**9mm**

**matt**  
SERIES

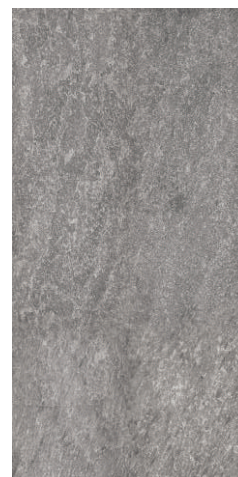
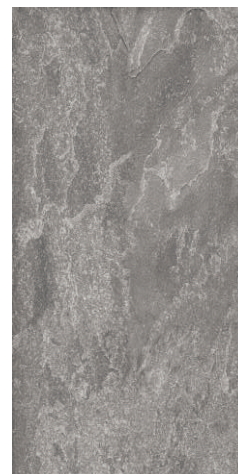
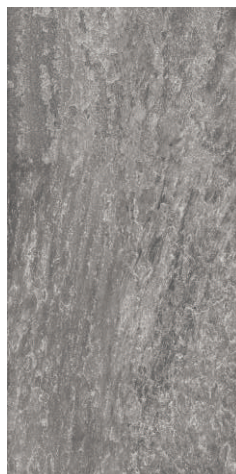




## ROYAL STONE GREY

Size :  
**600x1200mm**

Random



Thickness :  
**9mm**

**matt**  
SERIES





## ROYAL STONE SILVER

Size :  
**600x1200mm**

Random  
—————



Thickness :  
**9mm**

**matt**  
SERIES









## **RUSTY CHOCO**

Size :  
**600x1200mm**

Random  
————



Thickness :  
**9mm**

**matt**  
SERIES



## RUSTY GREY

Size :  
**600x1200mm**

Random



Thickness :  
**9mm**

**matt**  
SERIES





## SLATY GREY

Size :  
**600x1200mm**

Random



Thickness :  
**9mm**

**matt**  
SERIES





## SLATY NATURAL

Size :  
**600x1200mm**

Random



Thickness :  
**9mm**

**matt**  
SERIES









## SLATY SAND

Size :  
**600x1200mm**

Random  
— — — —



Thickness :  
**9mm**

**matt**  
SERIES



## **VANITY BEIGE**

Size :  
**600x1200mm**

Random  
— — — —



Thickness :  
**9mm**

**matt**  
SERIES









## **VANITY GREY**

Size :  
**600x1200mm**

Random



Thickness :  
**9mm**

**matt**  
SERIES





## **VERNISH BEIGE**

Size :  
**600x1200mm**

Random  
— — — —



Thickness :  
**9mm**

**matt**  
SERIES



## VERNISH CREMA

Size :  
**600x1200mm**

Random  
— — — —



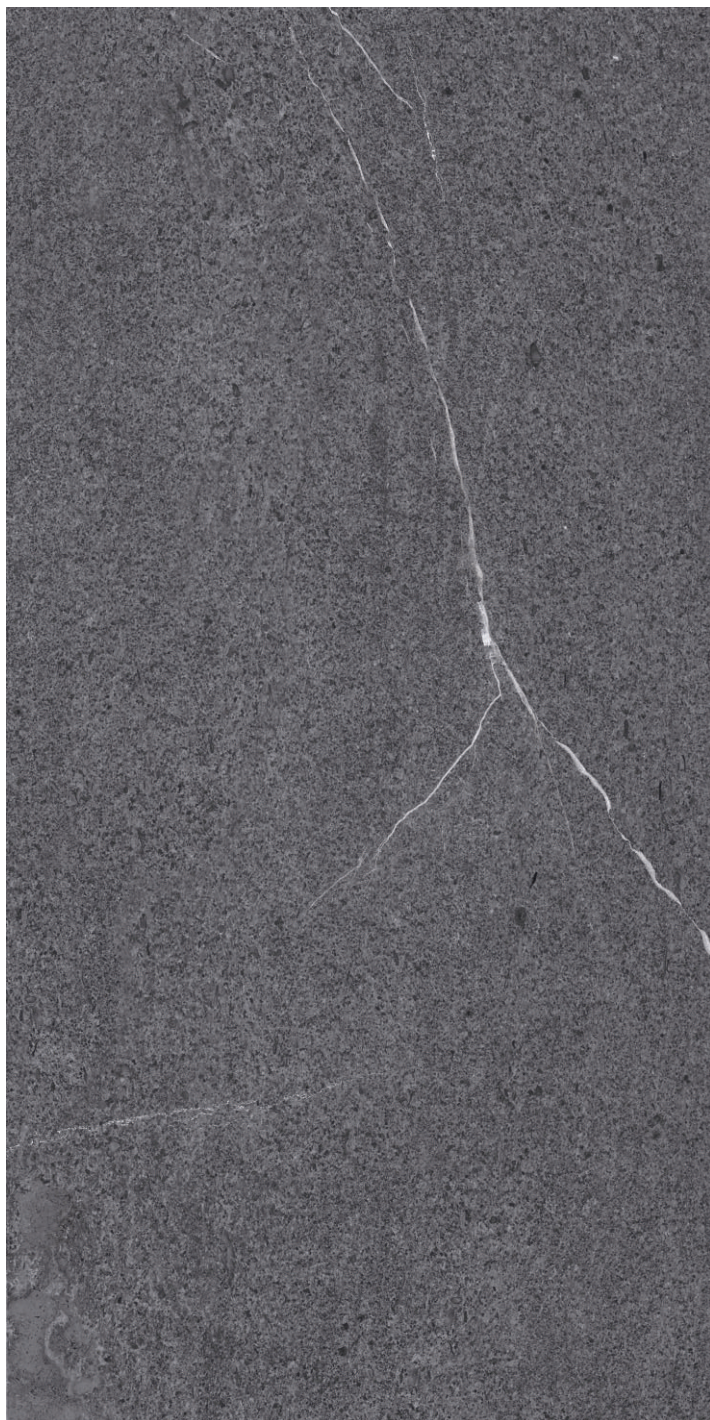
Thickness :  
**9mm**

**matt**  
SERIES





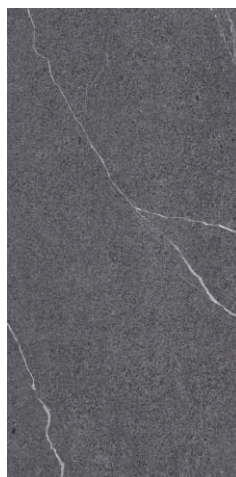
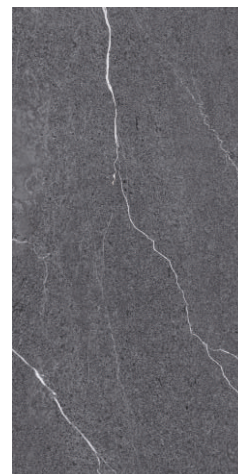
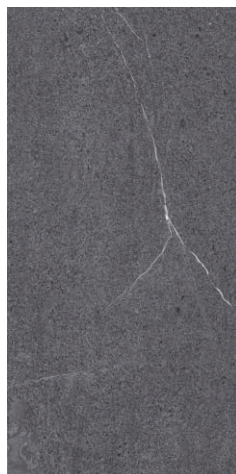




## VERNISH GREY

Size :  
**600x1200mm**

Random  
—————



Thickness :  
**9mm**

**matt**  
SERIES





## **VERNISH SILVER**

Size :  
**600x1200mm**

Random



Thickness :  
**9mm**

**matt**  
SERIES



# TECHNICAL SPECIFICATION

CHARACTERISTIC	STANDARD AS PER ISO13006:2018/ EN14411 Gr.Bla	MEAN VALUE OF SAVINO	TEST METHOD
Regulatory Properties			
Deviation in Length and Width	± 0.30 % (±1.00mm)	± 0.10 %	ISO 10545-2
Deviation in Thickness	± 5.00 % (±0.50mm)	± 4.00 %	ISO 10545-2
Straightness in Side	± 0.30 % (±0.80mm)	± 0.10 %	ISO 10545-2
Rectangularity	± 0.30 % (±1.50mm)	± 0.10%	ISO 10545-2
Surface Flatness Central Curvature	± 0.40 % (±1.80mm)	± 0.20 %	ISO 10545-2
Surface Flatness Edge Curvature	± 0.40 % (±1.80mm)	± 0.20 %	ISO 10545-2
Surface Flatness Warpage	± 0.40 % (±1.80mm)	± 0.10 %	ISO 10545-2
Surface Quality	>95% defects free	>95% defects free	ISO 10545-2
Small Color Difference(for Plain Colour)	ΔE <1.00	ΔE < 0.30	ISO 10545-16
Glossiness ( Polished)	as per mfg.	Gloss Value >90	Gloss Meter 60°
Glossiness (Matt)	as per mfg.	3< Gloss Value <7	Gloss Meter 60°
Glossiness (Satin/Posh)	as per mfg.	7< Gloss Value <18	Gloss Meter 60°
Structural Properties			
Water absorption	≤0.50 %	≤0.060 %	ISO 10545-3
Bulk density	as per mfg.	Min. 2.28 g/cc	ISO 10545-3
Massive Mechanical Properties			
Modulus of rupture	Min. 35.0 N/mm²	Min. 42.0 N/mm²	ISO 10545-4
Breaking strength thickness <7.5	Min. 700.0 N	Min. 1000.0 N	ISO 10545-4
Breaking strength thickness ≥7.5	Min. 1300.0 N	Min. 1800.0 N	ISO 10545-4
Breaking strength thickness ≥7.5(15mm)	Min. 1300.0 N	Min. 7500.0 N	ISO 10545-4
Surface Mechanical Properties			
MOH'S hardness #	as per mfg.	Polished Min. 4*/ Satin, Posh & Matt Min. 6	BS EN 15771
Surface abrasion resistance #	as per mfg.	Polished Min. 2 / Satin & Posh Min. 3 / Matt Min. 4	ISO 10545-7
Deep abrasion resistance #	Max. 175mm³	Max. 132mm³	ISO 10545-6
Thermal Hydrometric Properties			
Moisture expansion	Max. 0.06%(0.6mm/m)	Max. 0.02mm/m	ISO 10545-10
Thermal expansion(COE) at 100°C	as per mfg.	Max. 6.0 x 10 <sup>-6</sup>	ISO 10545-8
Thermal shock resistance	Min. 10 Cycle	Min. 10 Cycle	ISO 10545-9
Impact resistance(COR) #	Min. 0.55	Min. 0.55	ISO 10545-5
Frost resistance	as per mfg.	Frost Proof	ISO 10545-12
Chemical Properties			
Resistance to staining glazed	Min. Class 3	Min. Class 4	ISO 10545-14
Resistance to household chemicals & swimming pool salts glazed	Min. Class GB	Min. Class GA	ISO 10545-13
Resistance to low concentrate acid and alkalis glazed	as per mfg.	Min. Class GLA**	ISO 10545-13
Resistance to high concentrate acid and alkalis glazed	as per mfg.	Min. Class GHB**	ISO 10545-13
Safety Properties			
Skid resistance(DCOF-DRY) ##	as per mfg.	Glossy P0(<12) / Posh ≥P1 (12-24) / Matt ≥P2(25-34)	BS 7976-2
Slip resistance(DCOF)( R value) ##	as per mfg.	R9 to R13	DIN 51130
Fire resistance	as per mfg.	Fire Proof	N.A.
Parameters are applicable for 1st Choice/Premium Grade Materials Only.			

## PACKING DETAILS

PRODUCT	SIZE	THICKNESS	TILES / BOX
GLAZED PORCELAIN TILE	600x1200mm / 24"x 48 INCH	9mm	2 pcs.





## **SAVINO GRANITO PVT. LTD.**

Opp. G.E.B. Sub Station, Jetpar Rd, Behind Telephone Exchange,  
At. Rangpar, Gujarat-363642, INDIA

Contact : +91 99134 91000, +91 99130 84000 | Mail : [savinogranito@gmail.com](mailto:savinogranito@gmail.com)

Follow us on /   